

A young woman with blonde hair tied up is smiling and looking back over her shoulder. She is wearing a bright yellow, textured knit sweater and blue jeans. She is holding a black and orange coffee cup in her right hand and has a woven basket bag slung over her left shoulder. She is standing on a staircase with a wooden handrail, next to a glass door. The scene is brightly lit, suggesting an outdoor or well-lit indoor environment.

**MORE FLEXIBILITY  
MORE EFFICIENCY  
LESS HASSLE**



# EXPECT MORE FROM THE AFFORDABLE E MONOSPACE

The KONE E MonoSpace® is an economical solution that does not compromise on reliability, efficiency or comfort. Part of the KONE MonoSpace family, the KONE E MonoSpace elevator incorporates the core innovations that have made KONE the industry leader in eco-efficient elevator solutions.

## Pre-designed specifications to match your needs

The KONE E MonoSpace solution is offered with standardised, pre-designed options for car size and load. The available options are designed specifically to meet the typical needs of residential projects, and the clear specifications make it easy to choose and install the solution that best fits the needs of your building.

## Save energy with KONE eco-efficient technologies

The KONE E MonoSpace elevator is powered by the energy-efficient KONE EcoDisc® hoisting machine. It is also equipped with standby solutions that switch off the lighting and fan when the elevator is not in use.

## A smoother, quieter ride

The V3F variable-frequency drive along with the rigid car structure and its noise isolation, ensure a quiet, comfortable ride with smooth acceleration and deceleration.

## Easy installation and maintenance

The KONE E MonoSpace has highly efficient scaffoldless installation methods that result in considerable cost savings for our customers and minimise disruptions to other construction work.

## Certified for safety

All KONE manufacturing units are ISO 14001 certified and meet all elevator industry standards and requirements.

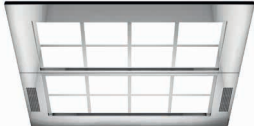
### KONE ELEVATOR RANGE

Product	Description + segment	Machine room	Max speed	Max travel	Max load/persons
KONE E MonoSpace	Economical elevator for residential buildings	No	1.75 m/s	75 m	1000 kg/13
KONE N MonoSpace	Versatile elevator for low and mid-rise residential and commercial buildings	No	1.75 m/s	75 m	1600 kg/21
KONE S MonoSpace	Highly flexible elevator solution for demanding commercial buildings	No	3.0 m/s	120 m	2500 kg/33
KONE MiniSpace	High-speed elevator for high-rise buildings	Yes	4.0 m/s	210 m	2000 kg/26
KONE Highrise MiniSpace	High-speed elevator for high-rise buildings	Yes	10.0 m/s	500 m	2000 kg/26
KONE TranSys	Adaptable passenger and goods elevator solution for public transport, retail, hospital buildings	No	1.6 m/s	40 m	5000 kg/66

# MORE VISUAL OPTIONS

With a selection of design components and materials to choose from, the KONE E MonoSpace® offers a cost-effective way to create a visually appealing elevator experience for the tenants in your building.

## CEILING



**CL70**  
Lighting: LED tubes  
Finishing: ST43 Silver brushed st st



**CL71**  
Lighting: LED tubes  
Finishing: PP10 White painted RAL9010  
ST43 Silver brushed st st



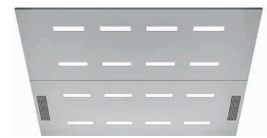
**CL88**  
Lighting: LED spot  
Finishing: ST43 Silver brushed st st



**CL91**  
Lighting: LED tubes  
Finishing: ST43 Silver brushed st st  
PP10 White painted RAL9010



**CL95**  
Lighting: LED tubes  
Finishing: ST43 Silver brushed st st



**CL103**  
Lighting: LED tubes  
Finishing: ST43 Silver brushed st st  
PP10 White painted RAL9010

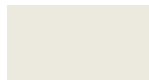
## HANDRAILS



**HR61**  
Round silver brushed

## CAR WALL MATERIALS

### Painted steel



**PP10**  
Pure White



**PP18**  
Linen Brown



**PP20**  
Wool Grey



**PP22**  
Fresh Green

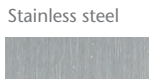


**METP1**  
Champagne



**METP2**  
Cosmo Red

### Metallic painted steel



**ST4/ST43**  
Silver brushed



**MP1\***  
Mirror polished st st



**ST375**  
Silver chain



**ST405**  
Silver polygon



**ST2**  
Golden

### Stainless steel



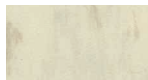
**HR64**  
Curved silver brushed

## FLOORING

### PVC



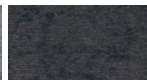
**D6**  
Light Brown



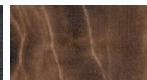
**D24**  
Moon White



**D25**  
Rocky Grey



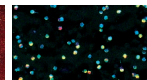
**D26**  
Lava Stone



**D27**  
Saturn Brown



**D29**  
Mars Red



**D30**  
Galaxy



**D31**  
Bamboo

### Patterned PVC



**DG01**  
Browny



**DG02**  
Chessboard



**DG03**  
Puzzle Soft



**DG04**  
Puzzle Bright



**DG05**  
Legno



**DG06**  
Blusher

### Real stone



**M3R**  
Black Golden Sand

### Artificial stone



**M5R**  
Pebble Grey

### Rubber



**RC7**  
Black Coin Pattern

\*Only available for rear wall  
All pictures are for reference purposes only.

Please contact KONE Sales for more information.

# MODERN SIGNALISATION

## SIGNALISATION

Car operating panel (COP)



KSC 220  
Full height COP,  
flush mounted



KSC 220  
Partial height COP,  
surface mounted

### Display type

- Dot Matrix: White or Amber with black background
- STN LCD: White with black background

### Mounting method

- Flush mounted for full height
- Surface mounted for partial height

### Button shape/ Mounting method

- Round
- Surface mounted

### Button

- Brushed stainless steel
- Braille

### Call register buzzer/ Gong on ceiling

- Optional



Speak to our sales consultants to see the full list of designs and panels available for E MonoSpace.

## LANDING DEVICES

Landing call station with indicator (LCI)



KSC 220

KSC 220

Landing call station (LCS)



KSC 220

Buttons



Hall indicator (HI)



KSC 220

### DISPLAY TYPE/COLOUR

- Segmented LCD: White
- Dot-matrix: White

Hall lantern (HL)



KSC 220

KSC 220

### LANGUAGE

- English

NOTE: Icons and text options available with dot matrix display.

# MORE OPTIONS TO FIT YOUR PROJECTS NEEDS

KONE E MONOSPACE BASIC DIMENSIONS										
Persons/rated load (kg)	Speed (m/s)	Car width BB x Car depth DD (mm)	Door opening Side opening SO Centre opening CO	Car type Single Entry Car SEC Through Car TTC	Landing Door Width LL (mm)	Landing Rough Opening LR (mm)	Shaft Well Width WW (mm)		Shaft Well Depth WD (mm)	
							NOM	MAX	NOM	MAX
06 / 480	1.0	950 x 1300	SO	SEC	700	900	1500	1800	1750	2300
					800	1000	1530	1800	1750	2300
			TTC	700	900	1500	1800	1860	1860	
				800	1000	1530	1800	1860	1860	
		1000 x 1250	CO	SEC	800	1000	1800	1850	1600	2180
					800	1000	1550	1850	1700	2250
			SO	TTC	800	1000	1550	1850	1810	1810
					700	900	1550	1850	1700	2230
		1000 x 1300	SO	SEC	800	1000	1550	1850	1700	2230
					700	900	1550	1850	1860	1860
			TTC	SEC	700	900	1550	1850	1860	1860
					800	1000	1550	1850	1860	1860
1200 x 1100	CO	SEC	800	1000	1800	2050	1600	2000		
			800	1000	1750	2050	1700	2030		
08 / 630	1.0 / 1.6 / 1.75	1100 x 1400	CO	SEC	800	1000	1800	1950	1730	2330
					800	1000	1800	1950	1860	1860
			CO	TTC	900	1100	2000	2170	1730	2350
					900	1100	2000	2170	1860	1860
			SO	SEC	800	1000	1690	2030	1780	2420
					900	1100	1690	2030	1780	2420
13 / 1000	1.0 / 1.6 / 1.75	1400 x 1600	CO	SEC	1000	1200	2200	2260	1980	2550
					1000	1200	1950	2270	2010	2620
			CO	SEC	900	1100	2000	2270	1980	2550
					900	1100	1950	2270	2010	2620
			SO	SEC	800	1000	1950	2270	2030	2620
					800	1000	1950	2270	2030	2620
		1100 x 2100	CO	TTC	1000	1200	2200	2260	2060	2060
					900	1100	2000	2270	2060	2060
			CO	SEC	900	1100	2000	2170	2400	3030
					900	1100	2000	2170	2560	2560
			SO	SEC	800	1000	1660	1970	2480	3120
					900	1100	1700	2070	2480	3120
1000	1200	1830	2090	2480	3120					
13 / 1000	1.0 / 1.6 / 1.75	1200 x 1980	CO	SEC	900	1100	2000	2270	2280	2910
					1000	1200	2150	2270	2280	2910
			SO	SEC	900	1100	1800	2070	2350	2900
					1000	1200	1830	2110	2350	2900
			CO	TTC	900	1100	2000	2270	2440	2440
					1000	1200	2150	2270	2440	2440
		1400 x 1700	CO	SEC	900	1100	2000	2270	2050	2630
					1000	1200	2200	2270	2050	2630
			SO	SEC	900	1100	2000	2270	2100	2630
					1000	1200	2000	2270	2100	2630
			CO	TTC	900	1100	2000	2270	2160	2160
					1000	1200	2200	2270	2160	2160

## OVERHEAD AND PIT DIMENSION

Rated speed, (m/s)	Car Height CH (mm)	Minimum Shaft Headroom height SH (mm)	Maximum Shaft Headroom height SH (mm)	Minimum Pit Height PH (mm)*	Maximum Pit Height PH (mm)
1.0	2100 – 2500	CH + 1380	5000	1150	1650
1.6	2100 – 2500	CH + 1570	5000	1300	2200
1.75	2100 – 2500	CH + 1620	5000	1360	2200

**Notes:**

1. SH is based on 700 mm balustrade height.
  2. For CH = 2100 mm, SH is the same as CH = 2200 mm.
  3. In cases where 1100 mm balustrade is used, please add 400 mm to SH height.
- \* The standard value is calculated based on PVC floor (14mm).

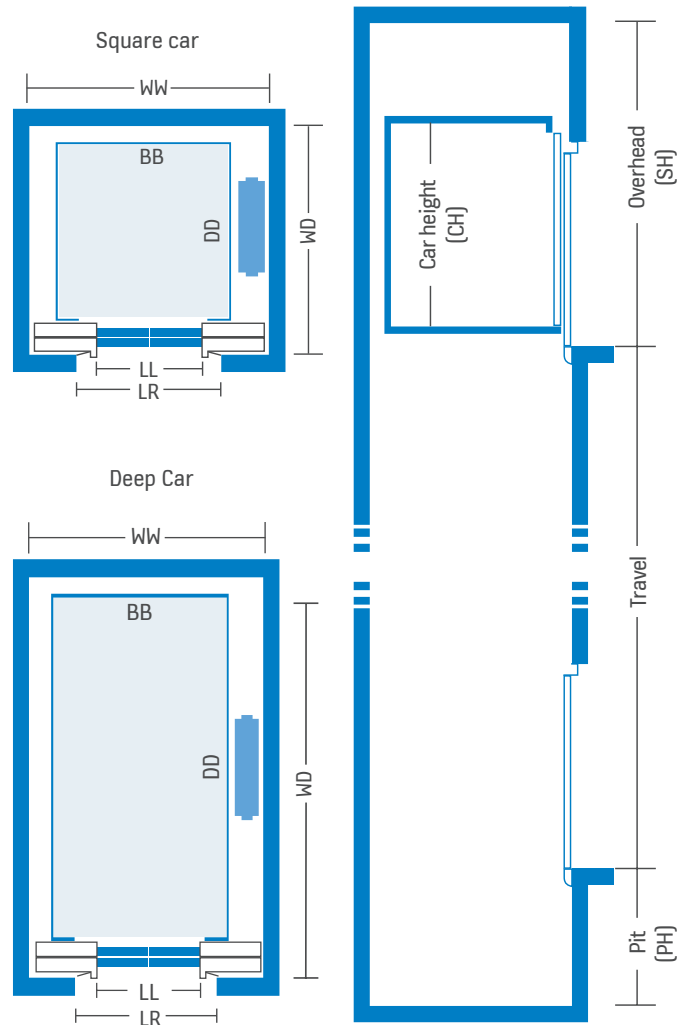
Please contact our sales consultants for any additional help with these dimensions

<b>Speed</b>	1.0 m/s, 1.6 m/s, 1.75 m/s
<b>Load</b>	320, 400, 450, 480, 630, 900, 1000 kg
<b>Max. stops</b>	16 (1.0 m/s), 18 (1.6 m/s), 28 (1.75 m/s)
<b>Max. travel [m]</b>	45 (1.0 m/s), 55 (1.6 m/s), 75 (1.75 m/s)
<b>Car height [CH]</b>	2100, 2200, 2300, 2400, 2500mm

**Note:**

- Dimensions are based on compliance with EN 81-20.
- All design details are based on a single elevator in a single shaft.

KEY	
LL	Landing Door Width
LR	Landing rough opening
WW	Shaft Well Width
WD	Shaft Well Depth
BB	Car Width
DD	Car Depth
SEC	Single entrance car
TTC	Through car (entrance front and rear)
CO	Centre opening
SO	Side opening
SH	Shaft headroom (Overhead)
CH	Car height
PH	Pit height



Contact us to discuss your project needs.

Our engineers and sales consultants are always available to answer questions and provide speedy quotations no matter the job.

#### KONE OFFICES

##### AUSTRALIA

ACT	Canberra and South West	Ph +61 2 6123 2600
NSW	Sydney Newcastle and North Coast	Ph +61 2 9577 7000 Ph +61 2 4949 3333
QLD	Brisbane Cairns Gladstone Gold Coast Sunshine Coast Townsville	Ph +61 7 3270 1810 Ph +61 7 4044 0888 Ph +61 7 4978 1222 Ph +61 7 5510 2700 Ph +61 7 5493 7000 Ph +61 7 4779 4106
NT	Darwin	Ph +61 8 8941 4047
WA	Perth	Ph +61 8 9270 9000
SA	Adelaide	Ph +61 8 8130 3800
TAS	Hobart	Ph +61 3 6231 2045
VIC	Melbourne	Ph +61 3 9934 8000

[www.kone.com.au](http://www.kone.com.au)

##### NEW ZEALAND

NTH	Auckland Wellington	Ph +64 9 361 9000 Ph +64 4 381 4330
STH	Christchurch Dunedin	Ph +64 3 338 3900 Ph +64 3 477 5627

[www.kone.co.nz](http://www.kone.co.nz)